

The new decision on working time is out!



From 01/04/2022, the new decision on working time will be finally into force!

Trade unions, staff committee and the administration worked a lot on the final layout to smooth the corners and produce an acceptable version of the decision, the first draft being totally inadmissible for the personnel.

Key points:

8 hours per day on average, in principle between 8:00 to 19:00

No core time but timeslots during which staff should be available

Disconnection period: 19:00 to 8:00 - No unplanned call in the late afternoon/morning

Up to 20% of teleworking is a right - 20% to 60% teleworking is possible upon approval

Telework abroad for up to 10 working days (not to combine anymore with holidays)

One of the biggest changes concerns the **core time**: « Staff should be available for interaction with other colleagues from 9:30 to 12:00 and from 15:00 to 16:30 (16:00 on Wednesdays and Fridays). **Staff need only to be reachable during these time slots.** This does not require (physical or virtual) presence » In other words, you are free to do your 8 hours between 8:00 and 19:00 but not bound to the core time: in exchange you need to be reachable (and not necessarily working).

During the negotiations we asked for more, notably more days of telework from abroad and 40% teleworking as a right. On the other side, the administration proposed much less than what is present in the last version of the decision... Anyway, **some discussions are still ongoing.** In particular, the possibility, for those willing to have it, to receive a corporate phone.

Can household products affect your health?



Cleaning is essential to protecting our health in our homes, schools and workplaces.

However, household and cleaning products - including soaps, polishes and grooming supplies - often include harmful chemicals. **Even products advertised as "green" or "natural" may contain ingredients that can cause health problems:** respiratory problems, allergic reactions and headaches.

Some products release dangerous chemicals, including volatile organic compounds (VOCs). Other harmful ingredients include ammonia and bleach. Even natural fragrances such as citrus can react to produce dangerous pollutants indoors.

Never mix bleach or any bleach-containing product with any cleaner containing ammonia.

The gases created from this combination can lead to chronic breathing problems and even death. Recent research has found that even natural fragrances in cleaning products, particularly in air fresheners, may react with high levels of ozone from indoor sources.

How can you prevent harm from cleaning and household products?

Read all labels on cleaning supplies and household products before you buy them. Choose products that do not contain or have reduced amounts of VOCs, fragrances, irritants and flammable ingredients. Avoid using air fresheners altogether. As a safer cleaning alternative, warm water and soap often will do the trick, especially at home. Baking soda is good for scrubbing. A mix of vinegar and water can clean glass. When using cleaning or household products, keep the area well ventilated. Open windows and doors. From <https://www.lung.org/>



An Open Source farming robot

(powered by Raspberry Pi)

Taylor is a robotics engineer at Twisted Fields in California and is the creator of **Acorn, a precision farming rover.** This guy is passionate about the idea of reducing the marginal cost of human survival - making living cheaper for all people: *"I have a feeling that we can innovate more in the world if we share our creations, and so we have offered Acorn as open source, in the hopes of building a community around this design."* Acorn is a robot launched in 2021 as an open source project. It is built on a **large frame** in order to have sufficient space to host central tools and a **computer vision system** for that work bay to automatically prepare the soil, plant seeds, kill unwelcome plants, and even harvest.



RoboFarmer seen on Hackaday

As stated in the blog (link below), Acorn is equipped with an **emergency braking system** that prevents a dangerous runaway scenario even under total power loss. The development team has also built a simulation mode that makes it possible to run the software on any normal computer without the need for robot hardware, and expanded the navigation code to support complex multi-part navigation paths.

Acorn has a **GPS system and four brushless motors** to drive its operations and last year successfully completed a continuous operation test, with 7 days in a row where Acorn would wake up at 8 AM, drive back and forth all day long until sunset, go to sleep, and then repeat the next day for 7 days straight.

The Acorn community is active on community.twistedfields.com.

More info on the community website and <https://hackaday.com/2022/03/17/>

Editors:
Cristiano Tessitore (Luxembourg)
Stathis Stefanidis (Bruxelles)

Comité de rédaction:
Cristina Ciubotariu, Michaël Nicolas (Luxembourg)
Bianca Iorattii, Svetla Shulga (Bruxelles)
Toula Giannakopoulou (EPP0 - Luxembourg)

Graphic design:
Svetla Shulga (Bruxelles)



Newsletter supported by
Dédé and :



Subscribe 😊 or opt out 😞 at any moment by writing to Cristiano or Stathis, or not

IPSE DIXIT

Lorsque les pères s'habituent à laisser faire les enfants, lorsque les fils ne tiennent plus compte de leurs paroles, lorsque les maîtres tremblent devant leurs élèves et préfèrent les flatter, lorsque finalement les jeunes méprisent les lois parce qu'ils ne reconnaissent plus, au-dessus d'eux, l'autorité de personne, alors c'est là en toute jeunesse et en toute beauté, le début de la tyrannie Platon (428-348 AC)

La capsule Fiscale



L'optimisation des dons de propriétés immobilières

Quand un propriétaire immobilier décède, en Belgique une taxe est due jusqu'à concurrence de 30% de la valeur de la propriété.

Cette capsule fait le point sur la possibilité de faire un don de ses biens, notamment en tenant compte de:

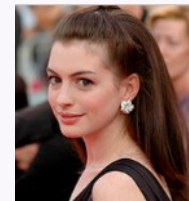
Droits de succession

Position du donneur

Position de l'époux/épouse ou du partenaire

Plus d'info sur:

<https://www.youtube.com/watch?v=NMGaZPJQ7Cw>



Sympa



Anne Hathaway is an American actress, born in 1982. Very famous after her role in « Devil wears Prada » she played in several movies like Interstellar and Ocean's 8. Anne is married to **Adam Shulman**, actor and businessman.

What is impressive is the resemblance between Adam Shulman and William Shakespeare.

Well, what is the point? The wife of William Shakespeare was also called Anne Hathaway! Also, it is not clear if this corresponds to the reality or not, it looks like that William Shakespeare said to her wife: « Life is too short to love you in one; I promise to look for you in the next life ».

Photos and sources: Wikipedia - nosweatshakespeare.com



Shulman vs Shakespeare Vs Dédé: can you see the similarities?

Subscribe 😊 or opt out 😞 at any moment by writing to Cristiano or Stathis, or not